

Are We Ready?

What K-12 Educators Can Do to Support Young Multilingual Children

WIDA Early Years eLearning Resources for Supporting Transitions to Kindergarten

Are We Ready? promotes collaboration among early care and education (ECE) professionals and K-3 educators and offers recommendations for supporting multilingual children and their families as they transition from ECE settings to Kindergarten.

The resources approach school readiness through an asset-based, equity lens and raise three key guiding questions: Is your district ready to support young multilingual children? Is your school ready? Is your staff ready?

Start exploring and learning more today!

Educators in [WIDA Early Years member states](#) can access the following Are We Ready? professional learning resources through their state's WIDA Early Years eLearning system:

- 30-minute online webinar that introduces key concepts and themes
- Webinar handout with questions to guide self-reflection
- Webinar Companion Guide that offers practical ideas and sample tools

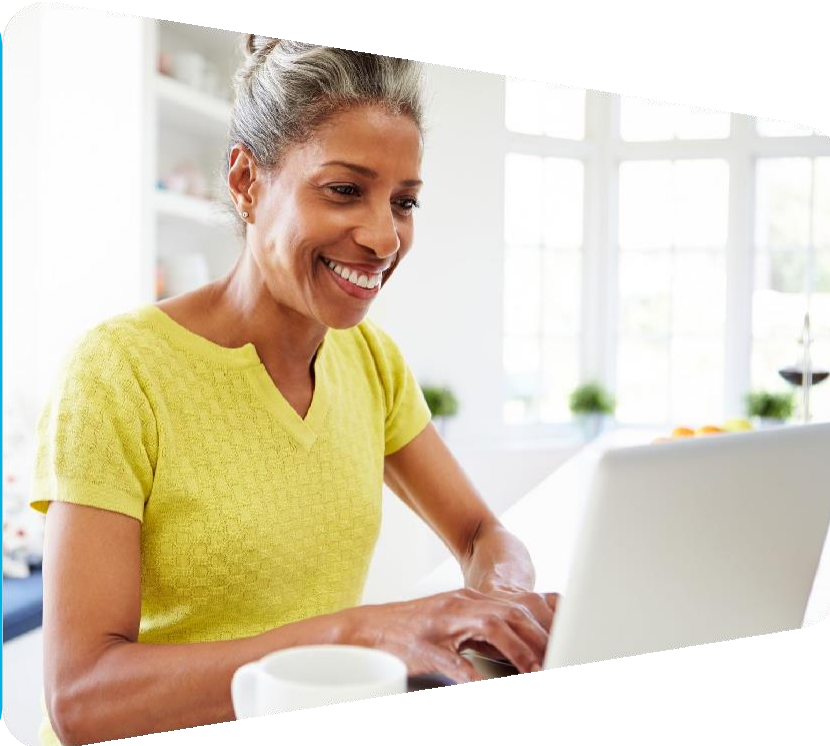


"As advocates for multilingual children and families, we must challenge traditional notions of school readiness and instead ask, are we ready? Is our district ready? Is our school ready? Is our staff ready? We, too, must be ready to serve and support the children and families entering our school communities."

Are We Ready? Webinar Companion Guide

Access Are We Ready? Resources

Visit go.wisc.edu/67rs6n to access these resources. Don't have an account, need help or have questions? Email help@wida.us.



Get Started Now!

I DO NOT currently have a WIDA Early Years training account

1. Go to go.wisc.edu/67rs6n and click Create new account
2. Enter your information and click Create my new account.
3. Review the information you just entered and click Save profile & continue.
4. Review the course options and confirm that you agree with the policy by checking the box next to I agree to this policy.
5. Click Save changes.
6. Click Enroll Now.
7. Complete any of the available modules!

I DO currently have a WIDA Early Years training account

1. Go to go.wisc.edu/67rs6n and enter your login information.
2. Review the information you just entered and click Save profile & continue.
3. Review the course options and confirm that you agree with the policy by checking the box next to I agree to this policy.
4. Click Save changes.
5. Click Enroll Now.
6. Complete any of the available modules!